

XX. *Descriptions of two new genera, and new species of Mymaridae from Tasmania.* By CHAS. O. WATERHOUSE, I.S.O., F.E.S., with illustrations from photographs by F. ENOCK, F.L.S., F.E.S.

[Read November 18th, 1914.]

PLATES XCII.

THE specimens which are the subject of this paper were collected on Mount Wellington, South Tasmania, in the spring of last year by Mr. R. E. Turner. They were found at the high altitude of 2,300 feet. Although there are only eight specimens, there are four species which are divided between two new genera. The one for which I propose the name *Selenaeus* is remarkable for the great length of the ovipositor, the projecting part of which is as long as the whole insect. The other three species are closely allied to the genus *Polynema*, but differ in having a very fine vein running for some distance close to the front margin of the wing; the thickened basal vein is slightly elongate, whereas it is punctiform in *Polynema*. The three species are of great interest as showing three degrees in the development of the vein. In one species the fine vein is distinctly emitted as a branch from the thick basal vein. In the second the fine vein is quite distinct, but it is separated from the thick vein by a slight interval. In the third species the vein is so fine and so close to the front margin that it is seen with difficulty. Fortunately of two of the species there are two specimens, so that one can feel quite certain that these differences are not individual peculiarities. The wings of the species are of different shapes. Mr. Turner thinks that these species may be associated with some Homopterous galls which were very abundant where they were taken.

SELENAEUS, gen. nov.

Antennae eleven-jointed (including the club which consists of three joints), the third extremely short. Front wings ample, the front margin of the apical portion arched, the posterior margin rather straight; the vein linear, extending a little beyond the

TRANS. ENT. SOC. LOND. 1914.—PARTS III, IV. (FEB.)

level of the posterior dilatation. Abdomen subsessile, apparently compressed [not in good condition]. Ovipositor extremely long, the portion projecting beyond the apex of the abdomen as long as the whole insect. Legs slender, the tarsi four-jointed, the basal joint very long.

I think this genus may be placed near *Anaphes*, with which it agrees in having a very small third antennal joint, and in the general form of the wings. It differs in having eleven joints to the antennae and in having long slender legs and tarsi. The ovipositor is unlike that of any Mymarid known to me, and is much longer even than in *Eustochus*.

Selenaeus Turneri, sp. n.

♀. Pitchy black, the back part of the mesonotum brownish yellow. Head rather large. Antennae .95 in length; the basal joint brown, finely rugose; the second joint brown; the third very small, subglobose, yellow; the fourth, fifth and sixth elongate, pale yellow; the seventh and eighth shorter and broader, brown; the club elliptical, distinctly three-jointed, brown. Front wings $1.35 \times .32$ mm., hyaline, but all the margins slightly clouded with brownish yellow, and there is a distinct pale brown shade across the wing below the vein. The surface hairs are very fine, rather short, not very close together. The cilia are long, even those along the front margin, the longest .2 m. The hind-wing slightly clouded with brownish yellow, not curved forward as in *Anaphes*, posterior cilia long, about 42 in number. Legs yellow, the claws fuscous; the hind tibiae very long, slightly swollen towards the apex; tarsi rather long, the basal joint not quite equal to the three following taken together. Ovipositor yellow (the sheaths light brown), its total length from base of abdomen to apex about 1.45 mm.

Length 1.1 mm.

Hab. S. TASMANIA, Mount Wellington, 2,300 ft., March 22, 1913.

PALAEONEURA, gen. nov.

General characters and appearance of *Polynema*. Antennae of female nine-jointed; the third, fourth, and fifth joints elongate, the club consisting of one joint. Front wings ample, the vein slightly elongate (less punctiform than in *Polynema*) emitting from its apex a fine vein (sometimes interrupted) which runs close to the front

margin and extends for some distance. Abdomen petiolate. Tarsi four-jointed, the basal joint very elongate.

The species for which I propose this new generic name may be regarded as a primitive *Polynema* in which the wing vein, although evanescent, is still present for a considerable length, the basal thickened portion is moreover longer than in typical *Polynema*. The build of the insects is somewhat different from that of the European *Polynema* owing to the thorax being less narrowed in front and behind.

Palaeoneura Turneri, sp. n.

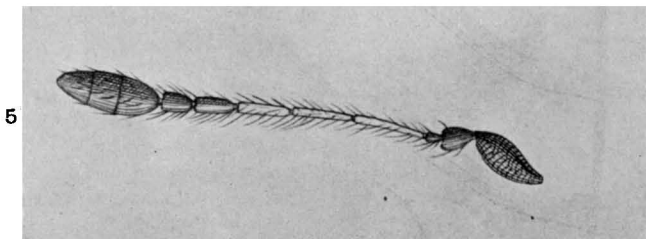
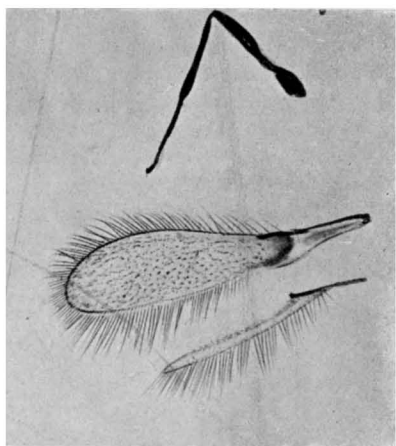
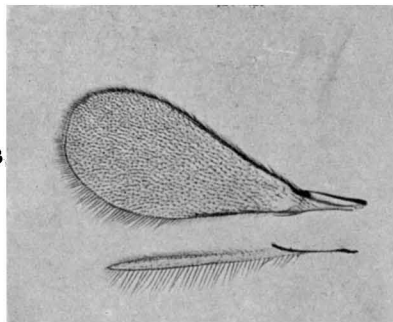
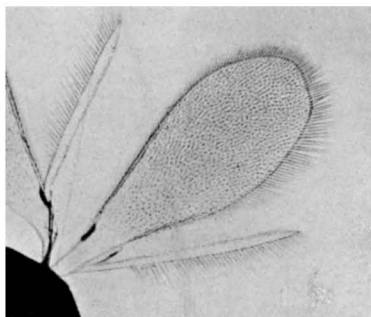
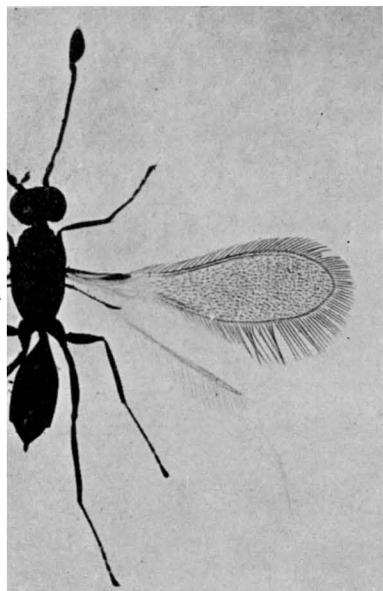
♀. Black, shining, the petiole of the abdomen and the legs dark pitchy, the knees paler. The tibiae are paler than the femora. The front tarsi are pale pitchy with the apical joint very dark. The posterior tarsi have the first and second joints pitchy yellow, the third pale pitchy, the fourth very dark. The basal joint and half the second are together equal to the remaining joints. Antennae with the second joint pale pitchy below, the third, fourth and fifth joints elongate narrow, the sixth a trifle shorter and broader, the seventh much shorter, the eighth as long as the sixth, much widened in the middle, the club equal in length to the eighth, seventh and about half the sixth together. Front wings very broad $1.45 \times .55$ mm., the apex rounded, the apical portion of the hind margin rather straight, and slightly oblique; the surface hairs very close, short and fine; the longest cilia .16 m. The posterior wing with about 47 cilia to the hind margin.

Length 1.3 mm.

Hab. TASMANIA, Mount Wellington, 2,300 ft., March 22 and April 6, 1913.

Palaeoneura interrupta, sp. n.

♀. Black, shining. Antennae with the second and third joints pitchy yellow, the second with its upper edge dark. The third joint very slender, a little longer than the second, the fourth and fifth much longer, the sixth and seventh each shorter, the eighth very short, ovate, the club and the eighth joint together equal to the seventh, sixth and fifth together. Front legs, except the base of the femora and apical joint of the tarsi, pitchy yellow, shaded in parts with light pitchy. Posterior legs dark pitchy, the knees and basal joint of the tarsi pitchy yellow; the second and third joints rather darker. The basal joint of the hind tarsi very long, a trifle



Photo, F. Enock.

NEW TASMANIAN MYMARIDAE.

longer than the remaining joints together. Front wings rather broad, the width greater than one-third of the length, $1.25 \times .375$ mm. The surface hairs very short, close and fine. The longest cilia .26 m., more than half the width of the wing. The vein with a short space between the thick basal part and the fine branch. Hind-wings with very few surface hairs, and with about 35 cilia on the hind margin. Petiole of abdomen pitchy yellow, dark at the base.

Length 1.3 mm.

Hab. TASMANIA, Mount Wellington, 2,300 ft., March 21 and 25, 1913.

Palaeoneura evanescens, sp. n.

♀. Black, shining. Antennae with the second and third joints pale pitchy below. The third joint elongate, slender; the fourth and fifth a trifle longer and stouter; the fifth to eighth joints gradually shorter and stouter; the club comparatively small, about equal in length to the eighth and seventh together. Legs dark pitchy, the tibiae paler, the knees, apex of the tibiae and the basal joint of the tarsi pitchy yellow; the second and third joints a little darker, the apical joint very dark. The basal joint of the hind tarsi about equal to the second and third together. Front wings very broad, $1.4 \times .512$, very obtusely rounded at the apex, the vein very fine and very close to the margin. Surface hairs very close, fine and very short. The longest cilia only .075. Hind-wings with about 46 cilia on the hind margin.

Length 1.325 mm.

Hab. TASMANIA, Mount Wellington, 2,300 ft., March 12 and April 6, 1913.

EXPLANATION OF PLATE XCII.

- FIG. 1. *Palaeoneura interrupta*, Waterh., type. $\times 30$.
2. *Palaeoneura Turneri*, Waterh., type. $\times 30$.
3. *Palaeoneura evanescens*, Waterh., type. $\times 30$.
4. *Selenaenus Turneri*, Waterh., type. $\times 30$.
5. " " , antenna greatly enlarged.

FEBRUARY 27TH, 1915.