

International Field Excursion in the Russian Altai and Workshop on Geodynamic Evolution, Tectonics and Magmatism of the Central Asian Orogenic Belt

Novosibirsk, Russia, June 19-30, 2010

<http://altay2010.igm.nsc.ru>

Second circular



Organized by

Institute of Geology and Mineralogy, Siberian Branch, Russian Academy of Sciences

Sponsors:

International Lithosphere Program (ILP)

Russian Foundation for Basic Research (RFBR)

Centre for Russian and Central EurAsian Mineral Studies (CERCAMS)

Presidium of the Siberian Branch of the Russian Academy of Science

ORGANIZING COMMITTEE

Dobretsov Nikolai, Academician, Chairman, Institute of Geology and Mineralogy SB RAS, Novosibirsk

Borisenko Alexander, Prof., Institute of Geology and Mineralogy SB RAS, Novosibirsk

Buslov Mikhail, Prof., Institute of Geology and Mineralogy SB RAS, Novosibirsk

Izokh Andrei, Prof., Institute of Geology and Mineralogy SB RAS, Novosibirsk

Safonova Inna, Dr., Institute of Geology and Mineralogy SB RAS, Novosibirsk

Sennikov Nikolai, Prof., Institute of Oil-and-Gas Geology and Geophysics SB RAS, Novosibirsk

Simonov Vladimir, Prof., Institute of Geology and Mineralogy SB RAS, Novosibirsk

Vladimirov Alexander, Prof., Institute of Geology and Mineralogy SB RAS, Novosibirsk

SCIENTIFIC COMMITTEE

Allen Mark, Durham University, United Kingdom

De Grave Johan, Ghent University, Belgium

Degtyarev Kirill, Geological Institute RAS, Moscow, Russia

Didenko Alexey, Institute of Tectonics and Geophysics FEB RAS, Khabarovsk, Russia

Gordienko Ivan, Geological Institute of the BSC SB RAS, Ulan-Ude, Russia

Jahn Bor-ming Institute of Earth Sciences, Academia Sinica

Isozaki Yukio, Tokyo University, Japan

Khanchuk Alexander, Far-East Geological Institute FEB RAS, Vladivostok, Russia

Kovalenko Vyacheslav, IGEM RAS, Moscow, Russia

Kröner Alfred, University of Mainz, Germany, and SHRIMP Centre, Beijing, China

Leonov Mikhail, IGEM RAS, Moscow, Russia

Maruyama Shigenori, Tokyo Institute of Technology, Japan

Natal'in Boris, Istanbul Technical University, Istanbul, Turkey

Ota Tsutomu, Okayama University, Japan

Seltmann Reimar, Natural History Museum, London, UK

Sengör Celal, Istanbul Technical University, Istanbul, Turkey

Sklyarov Eugene, Institute of Earth Crust SB RAS, Irkutsk

Sun Min, Hong Kong University, China

Tomurhuu Dondov, IGMR MAS, Ulaanbaatar, Mongolia

Tomurtogoo Onongyn, IGMR MAS, Ulaanbaatar, Mongolia

Wang Tao, Chinese Academy of Geological Sciences, China

Windley Brian, University of Leicester, United Kingdom

Xiao Wenjiao, Chinese Academy of Sciences, Beijing, China

Yarmolyuk Vladimir, IGEM RAS, Moscow, Russia

Symposium Secretariat

Buslov Mikhail and Safonova Inna (Institute of Geology and Mineralogy SB RAS, Novosibirsk)

Pre-Workshop Excursion to the Gorny Altai (Russian Altai) : Continental margin of the Siberian continent, Altai-Mongolian Gondwana-derived terrane, and their separating suture-shear zone

The main geological units to be observed and discussed are located in the Kurai region, SE Gorny Altai, in the vicinity of Chagan-Uzun village, not far from the Russian-Mongolian state border and about 850 km from Novosibirsk (see map below). The Kurai region hosts the middle Paleozoic suture-shear zone separating the late Neoproterozoic-Cambrian units of the Kuznetsk-Altai island arc of the Siberian continent and the Gondwana-derived Altai-Mongolian terrane which is a segment of the Kazakhstan-Baikal composite continent (Buslov et al., 2001; Dobretsov & Buslov, 2007). The suture-shear zone formed during Late Devonian closure of the Paleo-Asian Ocean and subsequent collision of the Siberian continent with the Altai-Mongolian terrane. It was later disrupted by late Paleozoic strike-slip faults which resulted from collision of the East-European, Kazakhstan-Baikal and Siberian continents. During the excursion the participants will have opportunities to observe the following *main objectives*:

- 1) Precambrian units of the Altai-Mongolian terrane: quartz-feldspar turbidites, magmatic and volcanic rocks;
- 2) Late Neoproterozoic-Cambrian units of the Paleo-Asian Ocean and Kuznetsk-Altai island arc, including primitive island arc ophiolites with boninites, island-arc units and fore-arc turbidites, and an accretionary complex with oceanic plate stratigraphy and seamounts, olistostromes, and eclogites;
- 3) Ordovician-Silurian passive margin units and Devonian active margin units.
- 4) A middle Paleozoic suture-shear zone: Ordovician ophiolites, Ordovician-Silurian blueschists and crystalline schists;
- 5) Late Paleozoic strike-slip faults.

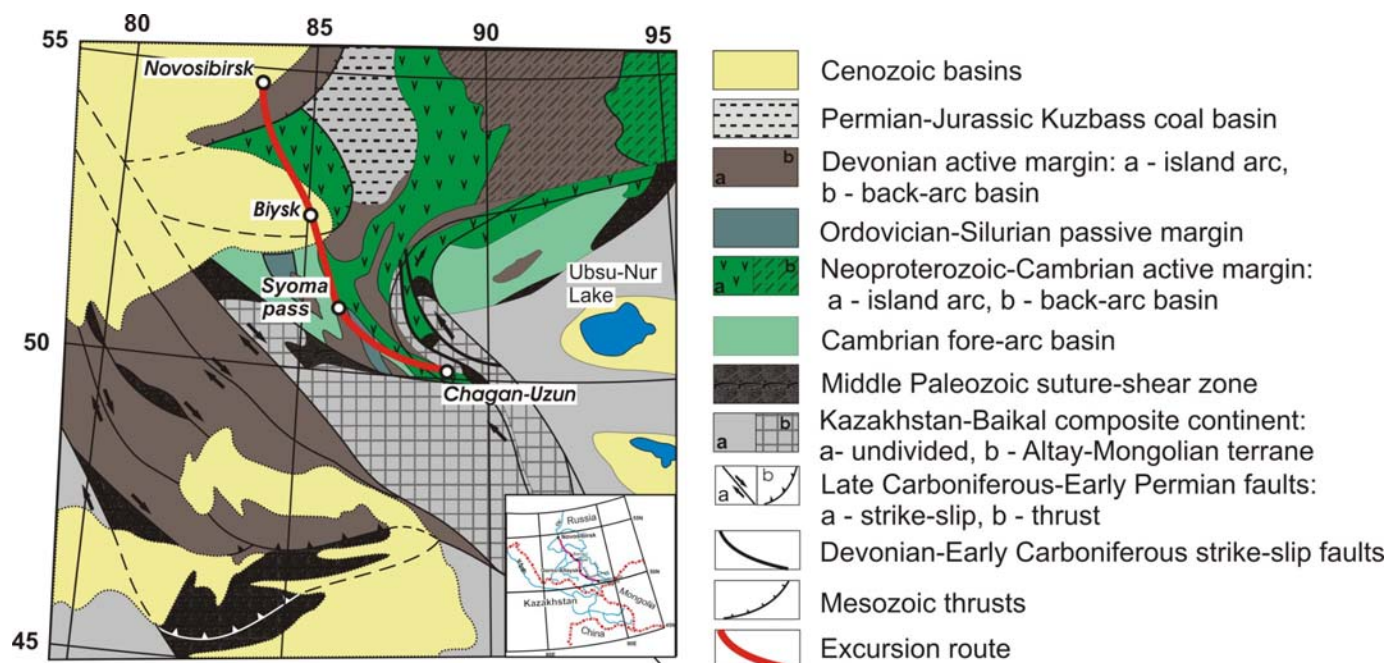


Fig. 1. Main geodynamic units of Altai and adjacent regions and route for pre-workshop field excursion to Gorny (Russian) Altai

Tentative Field Trip Schedule

Novosibirsk – Syoma Pass - Kurai - Chagan-Uzun – Novosibirsk

June 19. Arrival in Novosibirsk

June 20-21. Late Neoproterozoic to Paleozoic geodynamic units of the Siberian continental margin

June 20. Start for Altay by the Chuya Federal motor-road (M52) to cover a distance of about 600 km (overnight in a motel near the Syoma Pass). On the way we shall observe the Middle Cambrian Katun accretionary complex with Early Cambrian Ocean Plate Stratigraphy (OPS) and Cambrian island arc.

June 21. Arrival at the camp near Chagan-Uzun Vill. (Milestone 858). On the way we shall observe the Ordovician-Silurian passive margin (terrigenous-carbonate units) and Devonian active margin (granitoids).

June 22-24. Late Neoproterozoic to Cambrian active margin of the Siberian continent

June 22. Kurai accretionary complex: Late Neoproterozoic OPS with seamount and oceanic floor basalts, slope facies and carbonate cap sediments.

June 23. Chagan-Uzun massif: ophiolites (gabbro-peridotite), ophiolite metamorphic sole, metabasalt, serpentinitic mélange with eclogite blocks.

June 24. Late Neoproterozoic primitive island arc with boninites, Early Cambrian fore-arc turbidites, limestone with Archaeocyatha.

June 25-26. Two-day excursion to the Altai-Mongolian terrane and Middle Paleozoic shear- and suture-zone

June 25. Terrigenous sediments, felsic tuffs and lavas of the Altai-Mongolian terrane thrust over the Middle Paleozoic shear- and suture-zone, which is marked by metamorphic rocks.

June 26. Middle Paleozoic shear- and suture-zone with ophiolites and blueschists.

June 27. Reserved day in case of bad weather. Options: visit to the landslide triggered by the 2003 7.3M Chuya earthquake or starting to Novosibirsk in the afternoon with overnight on the way (to be clarified later).

June 28. Arrival to Novosibirsk by car/bus.

June 29. Workshop registration, sessions and ice-breaker

June 30. Workshop sessions and banquet.

July 1. Departure

International Workshop on “Geodynamic Evolution, Tectonics and Magmatism of the Central Asian Orogenic Belt”

Workshop Venue:

Conference Hall, Institute of Geology and Mineralogy SB RAS, Novosibirsk, Russia

Scientific sessions:

1. Geodynamic Evolution of the Central Asian Orogenic Belt and problems of continental growth: role of mantle plumes, Gondwana-derived continental blocks and subduction-accretion belts (Conveners: N. Dobretsov, W. Xiao).
2. Evolution of paleoceans and active continental margins: oceanic, accretionary and island-arc complexes (Conveners: B. Windley, I. Safonova)
3. Collisional tectonics and geodynamics: orogenic and post-orogenic magmatism, suture-shear zones, strike-slip faulting (Conveners: A. Kröner, M. Buslov)
4. Geodynamics and Metallogeny (Conveners: A. Borisenko, R. Seltmann)

Registration Fees*

Pre-workshop field excursion

Professional delegates 600 USD

Student delegates 300 USD

Field excursion fee includes guide-book volume, field guides, accommodation, food & transportation.

The fee does not include accommodation on the day of arrival in Novosibirsk on 19 June and on the day of return from the field on June 28.

Workshop

Professional delegates: 200 USD

Student delegates 70 USD

Workshop registration fee includes abstract volume, ice breaker, coffee breaks, closing banquet.

For mode of payment please contact the Symposium Secretariat.

Accommodation

The most convenient place for accommodation is the [Zolotaya Dolina Hotel](#), located within a 7-10 min. walk from the venue of the workshop (IGM SB RAS). Single room in Zolotaya Dolina Hotel is from 80 to 200 USD.

Important dates

Registration: March 18th, 2010 - for registration please send the registration form (see below) to the Secretariat.

Abstract submission: March 31st, 2010 (see below abstract preparation rules)

Confirmation of participation: March 18th, 2010

Pre-workshop field excursion: June 20-28, 2010.

Workshop Oral and Poster presentation: June 29-30, 2010

Registration and icebreaker: June 29, 2010

All correspondence and questions to be addressed to the Symposium Secretariat:

Dr. Inna Safonova or Dr. Mikhail Buslov: inna@uiggm.nsc.ru or misha@uiggm.nsc.ru

All the information is available at the workshop web-page <http://altay2010.igm.nsc.ru>.

* this fee is tentative; the final value may appear lower; it will depend on the amount of sponsors' support and the number of participants

REGISTRATION FORM

First Name	
Last Name	
Title:	
Institution:	
Address:	
Phone:	
Fax:	
E-mail:	
Title of my presentation	
Preferable form of presentation: oral/poster	
Accompanying person(s)	
I consider to participate in the Altay field excursion only	
I consider to participate in the workshop only	
I consider to participate in both	

CALL FOR ABSTRACTS

Title (Times New Roman, 14, bold)

L.B. Ivanov¹, B.L.Petrov² (Times New Roman bold, 12)

*Department of Geology, Central University, City, Country. ivanov@geol.uni.edu

**Irkutsk State University, Irkutsk, Russia, simast@isu.ru (Times New Roman, 11)

Abstracts must be submitted by e-mail as attached files in RTF or DOC format. Please name the attached file by the name of the first author (for example, ivanov.doc).

The abstracts must not be longer four A4 pages including tables, illustrations and references with all round margins of 25 mm. The text must be prepared using Microsoft Word (any version): Times New Roman, 11, single spaced, left justified, not paginated. Each table or figure and captions must be sent as separate files (e.g., ivanov_fig.jpg, ivanov_table.doc, ivanov_cap.doc). The size of tables must not exceed 150x240 mm. Figures prepared using Corel Draw must have lines not less 0.18-035 mm and text in Times New Roman or Arial. Scanned or Photoshop, Paintbrush and Corel Photopaint made figures must be saved at 300 dpi resolution minimum. TIFF files must be given without LZW compression, JPEG (JPG) files saved at 5 and higher quality.

Figures and tables should be referred in parenthesis: (Fig. 1), (Table 2).

References in the text must be given as numbers in brackets. The list of references (authors' names, full title of book/paper, city, publishing house, year, volume, pages) must be separated by a single line from the main text, numerically ordered, typed in Times New Roman, 10.