

# **The British Pteridological Society's Herbarium at the Royal Horticultural Society**

**Graham Ackers.**

**Deersbrook, Horsham Road, Walliswood, Dorking RH5 5RL**

**e.mail: [grahamackers@compuserve.com](mailto:grahamackers@compuserve.com)**



Unburdened by the mortality of living plants, herbaria provide an almost permanent reference for structural studies of plants from wherever and whenever their collectors cared to venture. A botanic garden in Pisa provided the first record of the preservation of dried pressed plants in the early sixteenth century. Providentially, such collections were then called 'hortus siccus' literally 'dried garden'. Providentially because the first BPS herbarium specimens would have come from, or been destined for, member's gardens. BPS and its members have held herbaria for over 100 years. In 2005 it was decided to move the main herbarium to the Royal Horticultural Society (RHS), and this is an account of that move.

There follows a brief history of our herbarium, then a similar account for the RHS herbarium, and finally a description of the components of the present BPS (now RHS) herbarium. Hopefully this article will prove of value to present and future generations of BPS members wishing to research and refer to fern cultivars.

## **History of the BPS Herbarium**

Following the circulation of letters to known fern enthusiasts, 10 people turned up to what was to be the inaugural meeting of the Northern British Pteridological Society, held on 23 September 1891 in Kendal, where many items relevant to the formation of a new society were discussed. With a committee having been elected, subsequent committee meetings were held, and during that of 6 June 1892 there was the proposal "That a Herbarium of all known British Ferns be kept by the Society for the purpose of example and these shall be passed by the Committee as being the standard and recognised types of such species or varieties & that Members be requested to forward fronds for the formation of such Herbarium and that be kept by the Sec of the Society." A classically defined hortus siccus in fact! The Secretary of the Society, and a founder member, was George Whitwell (1839-1924).

Although there were no specific minuted references to the herbarium for the next 18 years, it can be assumed that the herbarium was a going concern because submitted varieties were discussed and named at Society meetings.

The next reference to the herbarium appears in the minutes of the 19th Annual Meeting of the British Pteridological Society (our name having been changed at the Annual Meeting in 1892) held on 1 August 1910. George Whitwell had been Honorary Secretary from 1891, but at this meeting a letter was read out from Whitwell in his absence tendering his resignation both as Secretary and member of the Society. Following the usual expressions of regret, it was agreed that Whitwell be made an honorary member of the Society, and was also requested to continue as keeper of the Society's herbarium. (More on Whitwell in Hall, 1991).

It was apparent that Whitwell had accepted this request to continue as keeper of the herbarium, because at the Annual Meeting two years later on 5 August 1912, "It was resolved that a permanent record be kept of typical varieties of British Ferns found, raised or grown by the members & which they are requested to send for this purpose to the Annual Meeting in good condition for judging and preservation and that the committee shall determine such forms as shall be handed to Mr. G. Whitwell for preservation in the Society's Herbarium." In effect, a re-statement of the 1892 criteria. Whitwell was present at the meeting.

Thereafter, the trail went cold for 47 years as far as minuted references to a herbarium were concerned. It is highly unlikely, and very sad, that any of this early collection has survived within the current BPS/RHS herbarium. From the accounts that follow on the BPS component herbaria, only those of Padley, Elliot and Druery existed within this period. Padley's herbarium was not acquired by the Society until it was given to Jimmy Dyce some time on or after 1959. Druery's fronds were not maintained to herbarium standards, and were almost certainly for his own personal reference. It is also likely that Elliot's collection was for his own use, as on receipt at RHS they were not even within the BPS cataloguing system.

At the committee meeting of 7 March 1959, during a discussion on varietal naming problems, it was minuted that "The Editor [Clive Jermy] also considered we should build up a reference herbarium collection of varieties available for consultation. As the museum has already, several collections, the suggestion must be pursued further to see if they can be adapted for easier reference". It is a given fact that the Museum has a vast collection of herbarium specimens (including ferns) for scientific reference, and so the reference

# The British Pteridological Society's Herbarium

here to "several collections" must presumably refer to donations of cultivated fern herbaria.

At a later committee meeting in 1959, it was minuted that - "A useful acquisition to the Society would be a Herbarium of all varieties in cultivation today. The Secretary [Jimmy Dyce] offered to be responsible for the collection of pressed fronds from members and other sources. The Editor [Clive Jermy] is to announce this in the Gazette and to give full instructions on how to press fronds and what information to supply with them when passing them to the Secretary. In this way it is hoped that we shall be in a better position to identify fronds sent to us for naming". This seems to imply that little or no herbarium development had occurred since the previous discussion, but this time an article written by Jimmy Crabbe (a pteridologist at the Natural History Museum) did in fact appear in the December 1959 edition of the Gazette, with a follow up in 1961 (see Crabbe, 1959 & 1961).

At the Annual General Meeting in 1960, "the Secretary reported that fronds had been received by him for the Society's herbarium, but Mr. Dyer had sent a lot to the British Museum (Natural History)". This is interesting, because it implies that there might have been some confusion in the minds of members as to the best destination for their collections – the Natural History Museum or the Society. The Dyer collection, all *Athyrium filix-femina* cultivars, is still at the Museum, and consideration is being given to its future incorporation into the RHS herbarium.

Further confusion seems to have arisen, because at the committee meeting on 25 October 1961, "Mr. J. A. Crabbe was appointed Curator of the Society's Herbarium which will be housed at the British Museum (Natural History) in Cromwell Road, London SW7". Following this, therefore, did the Natural History Museum house two cultivar collections – its own plus the Society's, and did the Society's ferns in Jimmy Dyce's keeping ever get to the Museum?

At the committee meeting of 11 October 1977, the Secretary (Jimmy Dyce) reported that herbarium specimens had been made of Reginald Kaye's collection of varieties (see "BPS Kaye Collection" below), and further that "The Society's herbarium which has been missing for many years has been found in the Museum and the Secretary is spending time going through [this] as well as other variety herbariums. Arising from the report, Clive Jermy suggested that members could give valuable assistance at the Museum by helping to sort out herbarium sheets and it was suggested we put a notice in the Bulletin to this effect asking for volunteers". As far as I can ascertain, no such notice appeared.

At the committee meeting on 11 February 1978, it was noted that a member had offered to help sort the ferns at the Museum, and Clive Jermy "raised the question of the Society's herbariums lodged at the Museum and deemed it advisable that a list of them should be agreed with the Museum authorities to avoid any future misunderstanding about ownership. The secretary and J. A. Crabbe are to compile a list" Once again the herbarium history trail goes cold, but this time for only 25 years!

The housing of the BPS archives has always proved problematical for the Society as we do not have any

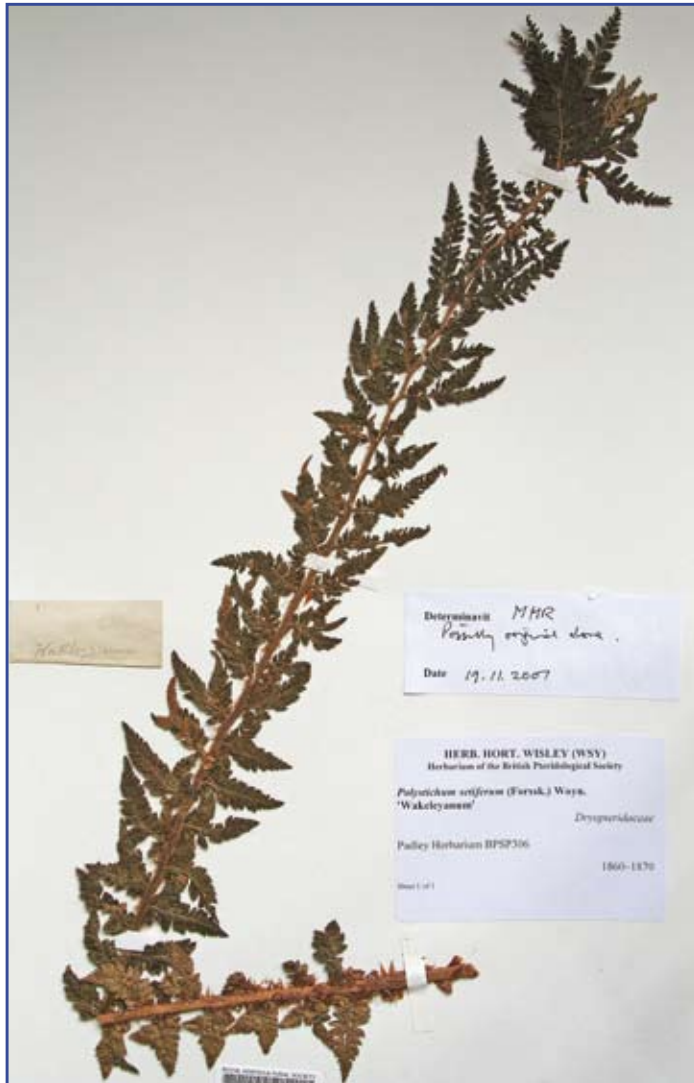


**Fig. 1** *Polystichum setiferum* Cruciatum Group  
Padley Herbarium BPSP405B

We do not inherit a name with this specimen of a frond from the Cruciatum group. It is not Wakelyanum but it is a fine cultivar, and it deserves a name. Cruciation in *Polystichum setiferum* and *Athyrium filix-femina* is often confined to the middle third of the frond but here it continues almost from the base to the tip. Notice that in the mid-section of the frond some pinnae branch into three. Renewed interest in historical cultivars may lead to a similar, named, frond being discovered elsewhere, perhaps in the as yet uncollated collections of fern cultivars at the Natural History Museum.

Martin Rickard

# The British Pteridological Society's Herbarium



**Fig. 2** *Polystichum setiferum* 'Wakeleyanum'  
Padley Herbarium BPSP306

*Polystichum setiferum* 'Wakelyanum'. I suspect quite a few members have a fern answering to this name, but is it right? Does their plant look like this specimen from the Padley herbarium (BPSP306)? Here 90% of the pinnae fork at or near the base, the frond is narrow and heavily crested. This must be very close to original Wakelyanum, given that Padley was active only 10 or so years after the original was found near Axminster in 1860, however, the Jones nature print (1878), reproduced by Druery in *British ferns and their varieties*, is different! The frond chosen by Jones is narrower than Padley's, thus begging the question which is the original!

Martin Rickard

premises. Typically, archive material has been spread around various members, although the Archivist of the day always held the bulk of the material, around 50% of which consisted of the herbarium. In 2002, the Committee agreed to move the archives to a commercial storage facility in Coventry, which took place in 2003. Whilst this solved some of the storage problems, obviously a cost was involved, and access to the material proved tricky for some. Therefore as part of an archives rationalisation program, in 2003 the Committee started to discuss the idea of offering the herbarium to RHS as an addition to their herbarium at Wisley. This was seen to have several advantages both to the Society and RHS :-

- It would reduce the Society's archival storage requirements and thus cost,
- It would enable the collections to be mounted or re-mounted according to RHS standards,
- The database accessioning would enable the data and names associated with the specimens to be vetted,
- The collection should be much more accessible to some BPS members and others wishing to work with the herbarium,
- The collection would be available to RHS staff to assist with their plant naming service and their annual compilation of the Plant Finder.

The offer was finally made in early 2005, and happily the then Keeper of the Herbarium, Diana Miller, agreed to accept the collection, but expressed the wish for volunteers from the Society to perform the accessioning work. Consequently, two of us started the project in May 2005, broadly the method of working being that Jennifer Ide performed the mounting and I did the data-basing – both working about one day per week (when we were available of course!). The whole exercise took over two years, being completed in June 2007.

## History of RHS Herbarium.

Between 1804 and 1856, the RHS maintained a herbarium which included specimens brought back by the Society's collectors such as Robert Fortune and David Douglas. Resulting from a financial crisis, this collection was sold at Sotheby's in 1856. Its subsequent whereabouts is unknown (ironically

predicting the fate of the early BPS herbarium some fifty years later).

The present herbarium was started in the early part of the twentieth century with specimens from the Society's new garden at Wisley. The core of the present herbarium resulted from a European collection of about 12,000 specimens donated by Frederick Hanbury in 1936. Levels of activity thereafter were low, until in the 1960s Chris Brickell took charge and started to co-ordinate effort to collect for the herbarium. An RHS botanist, Diana Miller, was appointed the first Keeper of the Herbarium in 1979, and focused on the development and expansion of the herbarium, which currently holds about 80,000 specimens, over

# The British Pteridological Society's Herbarium

30,000 colour transparencies of plants, and 3,300 watercolour paintings of award-winning plants painted mainly between about 1920 and 1940 (see article elsewhere illustrating three fern watercolours). Diana retired in 2005, and was succeeded as Keeper by another RHS botanist, Christopher Whitehouse.

The collections management database system used at RHS is called BG-Base. Development of this system commenced in 1985 at the Arnold Arboretum in Boston, and is now used by many USA institutions, and in the UK by the Oxford Botanical Garden and Royal Botanic Gardens, Edinburgh (from where it is supported in the UK). The general functionality of the system is very wide, institutions typically using only a proportion. RHS use it for recording their living, herbarium and picture collections, and it is a key tool for the annual preparation of the RHS Plantfinder.

For accessioning the BPS herbarium, we were required to enter various data such as plant name (including cultivar name and Group cultivar name where appropriate), the BPS herbarium number (see below), condition of the specimen (most of ours were "excellent" or "good"), and information about the origin of the specimen. Any labels and other data associated with a specimen were attached to the herbarium sheet to retain primary information sources. However, the data associated with some of our specimens was quite sparse, and sometimes handwriting was difficult to read. A bar code attached to the herbarium sheet provides instant access to the database record. Detailed notes on the use of the database in relation to the BPS herbarium have been lodged in our archives, together with a list of all the accessioned ferns to complement the original BPS archive lists. It is intended also that this list be posted on the BPS web site. BPS members wishing to access the collections could view this material, and should contact the Keeper of the Herbarium at Wisley.

Generally, the specimen name used was the one on the original herbarium sheet, unless it was obviously wrong, or an earlier synonym. Where no name was present, the specimen was given a name. Normally no attempt was made to identify un-named cultivars, but they were assigned to Cultivar Groups. "A Group is a formal category for assembling cultivars, individual plants or assemblages of plants on the basis of defined similarity" (I.C.N.C.P., 2004). General literature sources used for checking and assigning names were Druery 1910, Dyce 1987, Dyce 1988, Dyce 2005, Lowe 1890, Rickard 2000, and Stace 1997. Finally, in November 2007 Martin Rickard viewed the whole collection, suggesting various changes to the names of some of the accessioned specimens.

There follows an account of the component BPS collections that have been lodged at the RHS Herbarium. These collections are differentiated by the contents of the BG-Base field Herbarium Number, which is



**Fig. 3** *Polystichum setiferum* 'Wakelyanum'  
Kaye Herbarium BPSK176

Another frond from the Cruciatum group. This specimen from the Kaye collection (BPSK176), sourced from a Ripon garden, clearly has some of the characters of 'Wakelyanum' but very much diluted. It is therefore correctly placed in the Cruciatum Group, it is certainly not 'Wakelyanum'.

Do not, however, dismiss this specimen as being of no great interest! To me it looks to have close affinities with *Polystichum aculeatum*. Could it be *P.x bicknellii* Cruciatum Group? If this is this hybrid it is just possible it came from one of E. J. Lowe's early crossing experiments. Lowe mixed spores in a joint sowing of *P. setiferum*'Wakelyanum' with *P. aculeatum*. He chose these parents because he reasoned that if he raised a cruciate *P. aculeatum* he would prove ferns could hybridise. He succeeded!

Martin Rickard

# The British Pteridological Society's Herbarium



**Fig. 4** *Polystichum setiferum* (Multilobum Group) 'Incisum'  
Padley Herbarium BPSP341

The label with this frond (BPSP341) tells us it was found or raised by a Mr Jackson. It also tells us that the name has not been universally accepted over the years. The first given name of 'Interruptum' does not seem appropriate. Interruptum usually means irregular, depauperate or.... interrupted. This form is not really depauperate. The pinnules towards the tip of the frond are curiously lobed, possibly incised, it therefore seems the second given name is more appropriate and is the name used on the modern herbarium label.

Martin Rickard

formatted as "BPSxxx" for the general BPS collection, and "BPSyxxx" for the specific collections, where xxx is (normally) the original BPS herbarium number, and y is a letter to denote the identity of the collection. The format of this code is shown in brackets after the collection name below.

## General BPS Collection

These 212 specimens use the code number BPSxxx, or BPS5xx for the 33 specimens that do not have an original BPS number. Most of the specimens in this collection were assembled by Jimmy Dyce, albeit from a variety of sources, between 1952 and 1980. An additional collector was J. F. Healey, who contributed a number of *Polystichum setiferum* species and cultivars in the mid 1960s. There are 13 specimens that were collected around 1915, possibly by Druery, although no collector was recorded. The vast majority of the specimens are cultivars of British species.

In the 1980s, Jimmy Dyce, Martin Rickard, Ray Coughlin and Cor van de Moesdijk from Belgium exchanged views, specimens, pinnae and illustrations on many progenies and forms of *Polystichum setiferum* 'Plumosum Bevis'. This was triggered by the draft of an article prepared by Jimmy Dyce, and distributed to the others for comments. The variation in this cultivar complex proved to be so difficult to untangle that in the end the article was never published but a copy of the draft is in our archives. However 18 fronds from the BPS archives have been incorporated into the Wisley herbarium variously as *Polystichum setiferum* 'Plumosum Bevis', *P. setiferum* 'Pulcherrimum Bevis', *P. setiferum* 'Bevis Progeny', *P. setiferum* 'Drueryi' (some received as *P. setiferum* 'Plumosum Drueryi') and *P. setiferum* 'Pulcherrimum Drueryi' and given the numbers BPS505 to BPS522. (Note however that according to Dyce, 2005, p. 45, these specimens could now all be known as *Polystichum setiferum* Bevis Group.) The remaining material (collections of pinnae, photocopies of fronds/pinnae, versions of the draft article and correspondence) has been returned to the BPS archives.

There is a further set of miscellaneous *Polystichum setiferum* specimens without original BPS numbers, given numbers from BPS523 to BPS531. Most were collected and/or grown by Jimmy Dyce in the 1960s.

One noteworthy specimen (BPS526) is *P. setiferum* 'Pulcherrimum Green's Plumosum' being a very lacy frond with very divided long pinnules. Another plant (BPS524) was collected by Martin Rickard from a Devon garden in 1982, and is the remarkable *Polystichum setiferum* 'Plumoso-multilobum Deltoideum', first described by Cranfield (see Stansfield, 1929). The name format used then was "*Polystichum angulare divisilobum plumosum deltoideum*", and the article was accompanied by a photograph of a very fine frond. This has been reproduced as the lower illustration on page 81 of Dyce, 2005. The upper illustration on that page which, although not as pleasingly symmetrical as the original, is nevertheless a remarkable form. There are also three specimens (BPS529 – BPS531) of the very lacy *P. setiferum* 'Plumosum Gracillimum'.

# The British Pteridological Society's Herbarium

Specimen BPS532 is *Asplenium trichomanes* 'Incisum Greenfield' which is a much more finely divided version of the commonly available *A. trichomanes* 'Incisum Moule', and may not now be in cultivation (see Rickard, 2000, p. 64). The final specimens are *Equisetum palustre* (BPS533) and *E. telmateia* (BPS534), being two of a group of equisetums collected on Skye in July 1971.

## BPS Kaye Collection (BPSKxxx). 216 Specimens.

The bulk of this herbarium was collected by Jimmy Dyce from Reginald Kaye's nursery at Silverdale in June 1977. However, 6 of the specimens had earlier dates, suggesting that they may have existed as Kaye's own herbarium specimens. Apart from one specimen of *Dryopteris remota*, all the specimens are cultivars. This herbarium from one of our greatest fern experts and nurserymen contains a rich source of material, and is recommended for study by anyone interested in British fern cultivars.

## Padley Herbarium (BPSPxxx). 181 Specimens.

This herbarium was compiled by Rev. C. Padley and Thomas Smith between about 1860 and 1870. There are three specimens of *Polystichum aculeatum*, one of *P. lonchitis*, the remainder being *Polystichum setiferum* cultivars, assembled as the source material for a book that Padley intended to write. However, this did not happen, and so the documenting in book form of *Polystichum setiferum* cultivars has had to await the appearance of Dyce, 2005. The subsequent provenance of this herbarium as documented in the BPS archives is as follows –

Given by Thomas Smith to James C. House of Brace House and Son – Smith may have been the foreman gardener of this organisation.

Given by J C House to his foreman J Smith who became his head gardener (this information was supplied by A G L Hellyer, who was editor of *Amateur Gardening*).

Given by Hellyer to Mrs J R Healey, Lilly Hill Nursery, Bracknell, Berks.

Given by Mrs Healey to Jimmy Dyce when Secretary of BPS.

Held in safe keeping of Martin H Rickard until catalogued by A R Busby (acting Archivist) in 2004/5. Transferred and accessioned to the RHS Herbarium at Wisley 2005/6.

Considering the age of the collection, it is in remarkably good condition, and contains some fascinating material. Eleven of the specimens did not possess cultivar names, (and were entered as 'straight' *Polystichum setiferum*), but there are undoubtedly some interesting



**Fig. 5** *Polystichum setiferum* Setosum Group 'Kitsoniae' Padley Herbarium BPSP258

This frond (BPSP258) is a mystery to me. The original label says it is *Kitsoniae* but it is nothing like 'Kitsoniae' in the Moore herbarium at Kew. Here we can see the pinnules are flabellate, as they are on the Moore specimens. The Moore fronds are, however, all branched or crested at the tip. The fronds are also brachiate (triangular with elongated basal pinnae). The Moore specimens are therefore somewhat depauperate while this frond from Padley is indeed very handsome. Unfortunately the frond of 'Kitsoniae' in the Jones nature prints does not help. It is more like this frond but more delicate but not crested or strongly brachiate. The synonymous name for this is 'Brachiato-cristatum Kitson', an appropriate name for the Moore specimen.

Martin Rickard

# The British Pteridological Society's Herbarium



**Fig. 6** *Polystichum setiferum* 'Flabellipinnulum'  
Kaye Herbarium BPSK164

*Polystichum setiferum* 'Flabellipinnulum'. This is a very rare cultivar which is possibly extinct. Reg Kaye had a plant and even illustrated it in his book *Hardy ferns*. It is very similar to the relatively common 'Cristato-pinnulum'. Both have flabellate pinnules, ie. fan shaped, but in 'Flabellipinnulum' this character is strongest towards the top third of the frond and the fans are narrower, especially near the rachis. The frond is also of the typical breadth for *P. setiferum*, unlike 'Cristato-pinnulum' which is narrower and slightly more congested. If in doubt which one you grow it is almost certain to be 'Cristato-pinnulum' but...you never know someone out there might be lucky!

Martin Rickard

forms amongst these. All of the remainder were assigned to either cultivar groups, and/or cultivars based on a combination of the names in Dyce, 2005, the names given by Padley, names already in existence on the RHS database, and the advices of Martin Rickard.

Michael Hayward has researched biographical details of Padley – see article on page 51 in this journal. Hopefully in the future someone will perform a critical analysis of this important collection, perhaps with a view to publishing images of some of the ferns.

## **Elliot Herbarium (BPSExxx). 65 Specimens.**

Most of the ferns in this collection of 66 specimens had labels with the handwriting of Rev. E. A. Elliot (1890-1960), although odd ones seemed to be written in a different hand (and so may not have originated from Elliot). Edward Arthur Elliot was an active member of the Society, being Editor of the *British Fern Gazette* (1949-1959) and Secretary (1950-1959). During this period, he was the vicar of South Stoke near the southern end of the Chiltern Hills, having served previously in two other parishes. He died in 1960 after a period of intermittent poor health. See his obituary by Greenfield, 1961.

As the collection was not originally catalogued in the BPS archives, BPS numbers were allocated specifically for this exercise. The ferns were acquired over two periods. Most were from 1924 – 1931, the majority of these being 1928. A later period span was 1947 – 1956. Much of the collection consists of ferns from the British Isles (mainly species, some cultivars) collected in the wild, donated from other ferneries, bought from nurseries, and then typically grown in his fernery. However, one specimen (*Asplenium onopteris*, BPSE001) originated from southern France and was collected by Rev. C. H. Binstead, and there are 6 European *Aspleniums* plus a *Cystopteris montana* (BPSE062) acquired mainly in 1956 from Switzerland courtesy of Monsieur P. Villaret.

## **Druery Press Cuttings (BPSDxxx). 15 Specimens.**

The curious name for this collection arose simply because the specimens were collected by Druery and housed pressed un-mounted within sheets of newspaper within his collection of press cuttings (which reside in the BPS archives). There are 15 specimens, of which 12 were collected in October

1915, and 2 sometime between 1911 and 1915. Apart from a *Gymnocarpium dryopteris* (BPSD212) and a *Polypodium cambricum* (BPSD206), the remainder are cultivars. Three of these are of particular interest. *Polystichum setiferum* 'Plumosum Ramulosissimum' (BPSD201) was described and illustrated (with this specimen) by Druery, 1914, wherein he stated that "The sub-divisions are very slender and ramify persistently and so extensively that the frond resembles a mass of moss on the finest plumose lines". BPSD202 is

# The British Pteridological Society's Herbarium

*Asplenium scolopendrium* 'Transverso-cristatum', another remarkable if un-beautiful cultivar discussed by Druery, 1915b – "It has bold sub-sagittate fronds, bearing heavy twin crests, which cross each other transversely, hence the name". Both the illustration on page 57 (fig. 66) of Dyce, 2005, and in Druery, 1915a, are of the *Polystichum setiferum* 'Foliosum Edwards' specimen BPSD214. The frond is a particularly opulent foliosum example, but its origins are somewhat obscure - see the two accounts referenced above.

One fern from Druery's press cuttings was catalogued in the main herbarium sequence now having the number BPS172. This is *P. setiferum* (Plumosodivisilobum Group) 'Baldwinii', and a note with the frond includes the remark that "The variety is recognised as one of the very finest ever raised – (raised by Jones and Fox)".

Other notable and interesting ferns from this group are *Thelypteris* 'Grandiceps' (BPSD200), *Polystichum setiferum* 'Mrs. Thatcher' (BPSD203), and *P. setiferum* Plumosum Group (BPSD205).

## Australian Collection.

These 75 specimens use the code numbers BPSA0xx for ferns from Queensland and BPSA1xx for ferns from Victoria. How this collection came to be in the BPS archives is unknown. From the data on the specimens, they were collected in 1957/8 in both Queensland and Victoria by Mary D. Tindale. She published fern papers through the journal "Contributions from the New South Wales National Herbarium", so presumably was based in Sydney. She was an expert in *Lastreopsis*, and amongst others, published in the above journal the paper "Monograph of the genus *Lastreopsis* Ching", Vol. 3 No. 5, 1965. The specimens did not have BPS numbers, so Herbarium Numbers were allocated sequentially.

All of the specimens are native Australian species, although (somewhat surprisingly), not all were named. Supplying names with the assistance of Andrews 1990, Duncan & Isaac 1986 and McCarthy 1998 was relatively straightforward, apart from the un-named *Lastreopsis* where species differentiation is difficult and the names given must therefore be viewed as tentative.

## Future RHS Fern Herbarium Work

Since completing this exercise, I have accessioned a second collection of *Polystichum* cultivars donated by Cynthia Kelsall from the NCCPG Holehird collection. Martin Rickard has also donated his personal collection, and this is being accessioned. Shortly, we hope to acquire some of the cultivar collections at the Natural History Museum (there are 9 boxes in total!). Finally, we intend to identify the gaps in the RHS fern collection, and then persuade BPS members to supply the "missing" fronds. If successful, the RHS herbarium would ultimately contain a world class collection of fern species and cultivars grown (both indoors and out) throughout the temperate climates of the world. □



Fig.7 *Polystichum setiferum* Revolvens Group. Padley Herbarium BPSP268

*Polystichum setiferum* Revolvens group (BPSP268). A very uncommon type of cultivar. Reg Kaye told me he once had it and I found it once in Gwent about 25 years ago, but I know of no plants in cultivation today. The pinnae curl towards the underside of the frond forming a tube-like shape, just as seen in the much more common *Dryopteris affinis* 'Revolvens'.

Martin Rickard

# The British Pteridological Society's Herbarium

## References:

- Andrews, S. B. (1990).** *Ferns of Queensland*. Brisbane: Queensland Department of Primary Industries.
- Crabbe, J. A. (1959).** Herbarium specimens of ferns and their aberrations. *The British Fern Gazette*, Vol. 9, Part 1 (December).
- Crabbe, J. A. (1961).** Herbarium specimens of ferns II. *The British Fern Gazette*, Vol. 9, Part 2 (April).
- Druery, C. T. (1910).** *British Ferns and Their Varieties*. London: Routledge and Son.
- Druery, C. T. (1914).** New Ferns Up To Date. *British Fern Gazette*, Vol. 2., No. 19 (March).
- Druery, C. T. (1915a).** Our Frontispiece. *British Fern Gazette*, Vol. 2, No. 24 (June).
- Druery, C. T. (1915b).** Recent Acquisitions. *British Fern Gazette*, Vol. 3, No. 26 (December).
- Duncan, Betty D. & Golda Isaac (1986).** *Ferns and Allied Plants of Victoria*, Tasmania and South Australia. Melbourne University Press.
- Dyce, J. W. (1987).** Classification of Fern Variation in Britain. *Pteridologist* 1, 4.
- Dyce, J. W. (1988).** *Fern Names and Their Meanings*. Special Publication No. 2. London: British Pteridological Society.
- Dyce, J. W. (2005).** *Polystichum Cultivars*. Variation in the British shield ferns. Edited and expanded by Robert Sykes and Martin Rickard. Special Publication No. 7. London: British Pteridological Society.
- Greenfield, P. (1961).** Obituaries; Edward Arthur Elliot. *British Fern Gazette*, vol. X, pps 58-59.
- Hall, N. (1991).** The Presidents of the British Pteridological Society. In Camus, J. M. (Ed.) *The History of British Pteridology 1891-1991*. British Pteridological Society; Special Publication No. 4.
- I.C.N.C.P. (2004).** *International Code of Nomenclature for Cultivated Plants*, Seventh Edition.
- Lowe, E. J. (1890).** *British Ferns and Where Found*. Young Collector series. London: Swan Sonnenschein.
- McCarthy, P. M. (Ed.) (1998).** *Flora of Australia*. Volume 48. Ferns, Gymnosperms and Allied Groups. Australia: CSIRO Publishing.
- Rickard, M.H. (2000).** *The Plantfinder's Guide to Garden Ferns*. Newton Abbot: David & Charles.
- Stace, C. (1997).** *New Flora of the British Isles*, Second Edition. Cambridge University Press.
- Stansfield, F. W. (1929).** Our Frontispiece. *British Fern Gazette*, Vol. V, No. 12 (June).

## Appendix

Table of Number of Specimens in each Genus by Collection:

Genus	General	Kaye	Padley	Elliot	Druery	Tindale
Adiantum	2	1				7
Arthropteris						4
Asplenium	12	25		13	1	5
Athyrium	23	56		6		
Blechnum	2	1		4		11
Boyrychium	1			1		
Cheilanthes						6
Christella						3
Crepidomanes						1
Cryptogramma				2		
Cyclosorus						2
Cystopteris	1	1		4		
Doodia						5
Drynaria						3
Dryopteris	45	36		17	1	
Equisetum	2					
Gleichenia						2
Goniophlebium						1
Grammitis						1
Gymnocarpium				3	2	
Hymenophyllum	1					2
Lastreopsis						9
Microsorium						5
Nephrolepis						1
Osmunda	1	1		2		
Pellaea						1
Phegopteris				1		
Pleurosorus						1
Polypodium	15	15		4	6	
Polystichum	105	77	181	4	4	
Pteridium	1	3				2
Pyrrosia						1
Sticherus						2
Thelypteris				3	1	
Trichomanes				1		
Woodsia	1					
<b>Totals</b>	<b>212</b>	<b>216</b>	<b>181</b>	<b>65</b>	<b>15</b>	<b>75</b>